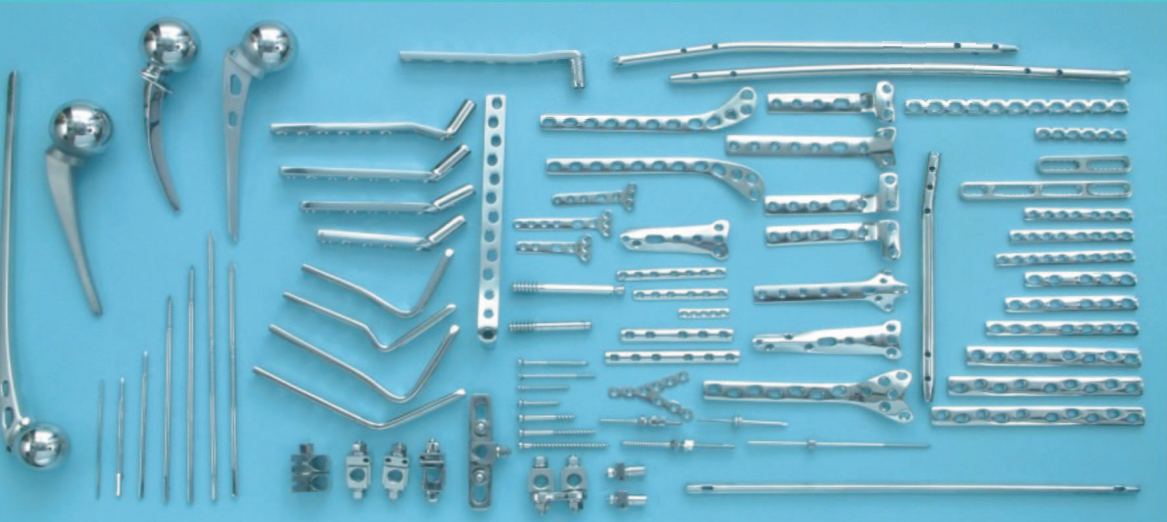




www.orthocare.in | www.orthoimplants.com

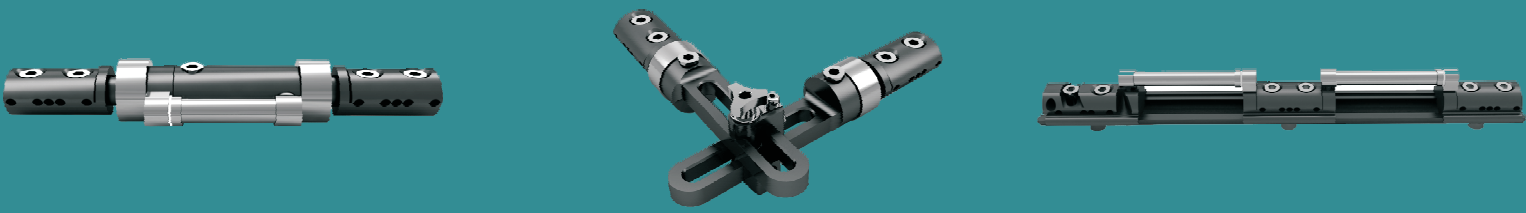


FROM WHEELS TO HEELS



MANUFACTURER OF IMPLANTS & INSTRUMENTS FOR FRACTURE TREATMENTS
 Locking Plates | Interlocking Nails | External Fixator's | Spinal Implants & Instruments
 Hip Prosthesis | Bipolar Modular Total Hip Replacement | Battery Operated Drill & Saw

FIXATOR SYSTEM



ISO 13485 : 2003 Certified
Mfg. License No.: 05/SC/P of 2011



ORTHO CARE

H.O. : 3/10, KIRTI NAGAR INDUSTRIAL AREA, NEW DELHI - 110 015, INDIA
 PHONE : +91-11-41424511, 41424522, 45092044 FAX : +91-11-47510708
 EMAIL : orthocare@vsnl.com WEB : www.orthoimplants.com
 FACTORY : A-31, SECTOR A-4, TRONICA CITY LONI, GHAZIABAD (U.P.) INDIA



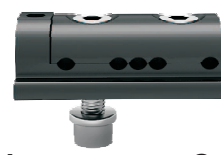
RAIL FIXATOR



Rail	Length	Cat. No.
	240 mm	R-1091.16
	300 mm	R-1091.17
	400 mm	R-1091.18



Central Clamp	Cat. No.
	R-1091.19



End Clamp	Cat. No.
	R-1091.20



Swivel Clamp	Cat. No.
	R-1091.21



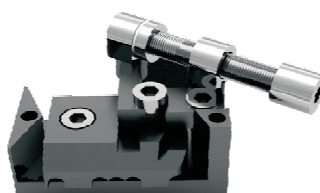
Ball & Socket Clamp Standard	Cat. No.
	R-1091.22



T-Ball & Socket Clamp	Cat. No.
	R-1091.23



CD Unit	Length	Cat. No.
	40 mm	R-1091.24
	80 mm	R-1091.25



Graduated Swivel Clamp	Cat. No.
	R-1091.26



T-Clamp	Cat. No.
	R-1091.27

R-1091.00 Instruments for Rail Fixation System

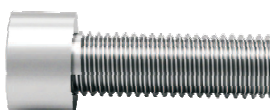
- R-1091.01 Trocar
- R-1091.02 Drill Bit 3.2 x 200mm
- R-1091.03 Drill Bit 4.5 x 200mm
- R-1091.04 Drill Bit 4.8 x 200mm
- R-1091.05 Template for end clamp & central clamp
- R-1091.06 Template for Swivel clamp
- R-1091.07 Drill Guide 6 x 3.2 x 40
- R-1091.08 Drill Guide 6 x 3.2 x 80
- R-1091.09 Drill Guide 6 x 5 x 40
- R-1091.10 Drill Guide 6 x 5 x 80
- R-1091.11 Drill Guide 5 x 2 x 43
- R-1091.12 Drill Guide 5 x 2 x 83
- R-1091.13 Screw Guide 8 x 6 x 60mm
- R-1091.14 Screw Guide 8 x 6 x 100mm



Metaphyseal Clamp	Cat. No.
	R-1091.28



Sandwich Plate	Cat. No.
	R-1091.29



Bolt for Sandwich Plate	Cat. No.
	R-1091.30



Dyna Ring Clamp	Cat. No.
	R-1091.31

DYNAMIC EXTERNAL FIXATOR



Dynamic External Fixator

SIZE	Cat. No.
SMALL	D-1100.08
MEDIUM	D-1100.09
LARGE	D-1100.10



Self Adjusting Clamp

SIZE	Cat. No.
SMALL	D-1100.11
MEDIUM	D-1100.12
LARGE	D-1100.13



T-End Clamp

Cat. No.
D-1100.14



Elbow Clamp

Cat. No.
D-1100.15



Linear Dynamic

SIZE	Cat. No.
SMALL	D-1100.16
MEDIUM	D-1100.17
LARGE	D-1100.18

- D-1100.00 Instruments for Dynamic External Fixation System
- D-1100.01 Screw Guide 8 x 6 x 60mm
- D-1100.02 Screw Guide 8 x 6 x 100mm
- D-1100.03 Drill Guide 6 x 3.2 x 40
- D-1100.04 Drill Guide 6 x 3.2 x 80
- D-1100.05 Drill Guide 6 x 5 x 40
- D-1100.06 Drill Guide 6 x 5 x 80
- D-1100.07 Allen Key 6mm



Dynamic Wrist Fixator

Cat. No.
D-1100.19

- ### INSTRUMENTS FOR DISTAL RADIUS EXTERNAL FIXATOR SYSTEM
- D-1100.21 Distal Radius External Fixator
 - D-1100.22 Distal Radius External External Instrumentation Set
 - D-1100.23 Jig for Fixator
 - D-1100.24 Half Pin Introducer for 4 mm
 - D-1100.25 Trocar for Fixator
 - D-1100.26 Drill Sleeve for Fixator
 - D-1100.27 Screw Guide for Fixator
 - D-1100.28 Drill Bit 2.5mm
 - D-1100.29 Allen Key Universal
 - D-1100.30 Container for Distal Radius Fixator Instrument Set



Distal Radius Fixator

Cat. No.
D-1100.20

PEDIATRIC RAIL SYSTEM



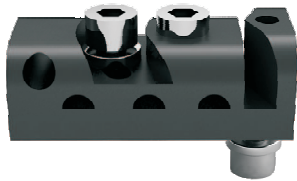
Rail	Length	Cat. No.
	150 mm	P-1200.08
	200 mm	P-1200.09
	250 mm	P-1200.10



Central Clamp	Cat. No.
	P-1200.11



End Clamp	Cat. No.
	P-1200.12



Swivel Clamp	Cat. No.
	P-1200.13



CD Unit	Cat. No.
	P-1200.14



T-Clamp	Cat. No.
	P-1200.15



T-Ball & Socket Clamp	Cat. No.
	P-1200.15

- P-1200.00 Instruments for Pediatric External Fixator
Contents:-
- P-1200.01 Screw Guide 8 x 6 x 60mm
 - P-1200.02 Drill Guide 6 x 3.2 x 40
 - P-1200.03 Drill Bit 3.2 x 200mm
 - P-1200.04 Half Pin Introducer D Type
 - P-1200.05 Allen Key 5 mm
 - P-1200.06 Templates for pediatric end and central clamp
 - P-1200.07 Templates for pediatric swivel clamp